

Project Room • Guest Young Artist

# Ana Franco Neto

## Apócrifos

— EN — 30.04 \<sup>26</sup> — 20.06 \<sup>26</sup>

Apócrifos is an exhibition by Ana Franco Neto at the Fundação Leal Rios that explores the artifact as means of symbolic construction of memory through a set of works that suggest a speculative world inhabited by enigmatic objects, archaeological references, undecipherable documents, and imaginary languages.

Each object suggests a function, an origin, a potential narrative. Among references to fossils, manuscripts, drawings, and tools, the showcased artifacts evoke imaginary temporalities, open to multiple possibilities of interpretation. In this regard, memory, according to the sociologist and philosopher Maurice Halbwachs, does not conform to direct access to a fixed past, but rather to a process of continuous reconstruction, created by present time social structures, such as languages, traces, and stories, which function as representations of remembrance (The Collective Memory, ed. 1980). Ana Franco Neto's pieces not only allude to memory through their familiarity, but also autonomously produce it, by means of their own systems of languages and symbolism. The undecipherable manuscripts accentuate this logic, demanding a closer approach from the observer in a reading gesture that inevitably remains unattainable. Between binary sequences of zeros and ones, as well as references to the Voynich manuscript<sup>1</sup> and to the *Beacon in the Galaxy* document<sup>2</sup>, the languages within the objects inhabit an ambiguous context that fluctuates between the attempt at decoding and the perseverance of the enigma.

The exhibition Apócrifos simultaneously summons the familiar and the mysterious, inhabiting a staged space that suggests an almost archaeological discovery



Artefacto #29, 2025, Glazed terracotta. © Courtesy Ana Franco Neto

of a constructed temporality that does not precede the objects, but emerges from them. More than re-establishing a memory, the works propose an ambiguous territory where the artifact ceases to function as a testimony or a trace of its own past origin, to become part of an imaginary universe, or an alternative narrative, in constant reconfiguration.

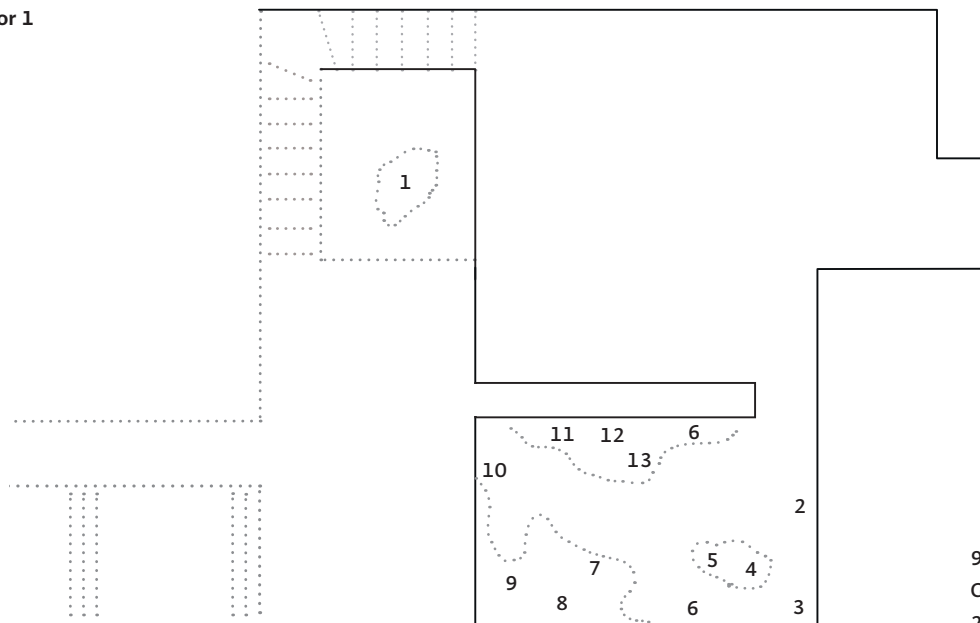
### Biography

Ana Franco Neto (1998) completed, in 2022, her degree in Painting with a minor in Theory and Aesthetics at the Faculty of Fine Arts in Lisbon, where she is currently pursuing a master's degree in Painting. Among her group exhibitions, highlights include the 23rd edition of "Aveiro Jovens Criadores" (Santa Joana Museum, Aveiro, 2026); the "Bienal Jov'arte" (Vieira da Silva Municipal Gallery, Loures, 2025); "Germinating in Silence" (Faculty of Fine Arts, Lisbon, 2025); and the 3rd edition of "Amplitude" (Solar dos Zagallos, Almada, 2025).

<sup>1</sup> The Voynich Manuscript, also known as the Voynich Codex, is a 15th-century illustrated manuscript containing illegible content. It was discovered in 1912 in Poland by Wilfrid Voynich.

<sup>2</sup> The *Beacon in the Galaxy* document is a proposed binary message, developed by international scientists (including members of NASA) about humanity, to be sent via radio waves to possible extraterrestrial civilizations in the Milky Way.

## Floor 1



1 \ Artefacto #26, 2025  
Glazed stoneware  
42 x 32 x 21 cm, Ed. Unique  
Courtesy Ana Franco Neto

2 \ Artefacto #20, 2025  
Glazed terracotta  
30 x 23 cm, Ed. Unique  
Courtesy Ana Franco Neto

3 \ Artefacto #32, 2025  
Glazed terracotta  
33 x 9 x 6 cm, Ed. Unique  
Courtesy Ana Franco Neto

4 \ Artefacto #8, 2025  
Glazed stoneware  
21,5 x 16 x 17 cm, Ed. Unique  
Courtesy Ana Franco Neto

5 \ Artefacto #17, 2025  
Glazed terracotta  
11 x 7 x 3 cm, Ed. Unique  
Courtesy Ana Franco Neto

6 \ Artefacto #21, 2025  
Glazed stoneware  
21 x 15 cm \ 23 x 15 cm, Ed. Unique  
Courtesy Ana Franco Neto

7 \ Artefacto #27, 2025  
Glazed stoneware  
33 x 13 x 13 cm, Ed. Unique  
Courtesy Ana Franco Neto

8 \ Artefacto #18, 2025  
Glazed terracotta  
18 x 27 cm, Ed. Unique  
Courtesy Ana Franco Neto

9 \ Artefacto #34, 2025  
Glazed stoneware  
28 x 39 x 8 cm, Ed. Unique  
Courtesy Ana Franco Neto

10 \ Artefacto #22, 2025  
Glazed stoneware  
28 x 73 x 2 cm, Ed. Unique  
Courtesy Ana Franco Neto

11 \ Artefacto #7, 2025  
Glazed stoneware  
35 x 14 x 13 cm, Ed. Unique  
Courtesy Ana Franco Neto

12 \ Artefacto #14, 2025  
Glazed stoneware  
24 x 24 x 14 cm, Ed. Unique  
Courtesy Ana Franco Neto

13 \ Artefacto #29, 2025  
Glazed stoneware  
44 x 32 x 2 cm, Ed. Unique  
Courtesy Ana Franco Neto

## Credits

## Director

Miguel Leal Rios

## Installation

Patrick Souto

## Curatorship and text

Sara Leichsenring

## Layout and Graphic Design

Concept MR\_D  
Fundação Leal Rios

## Production



Fundação Leal Rios

## Exhibition visits

Thursday to Saturday  
2:00 PM - 7:00 PM  
(Last entry 6:30 PM)  
Closed on public holidays

## Contacts

www.lealriosfoundation.com  
Rua do Centro Cultural, 17-B  
1700-106 Lisboa, PORTUGAL  
T \ +351 218 822 573  
E \ contact@lealriosfoundation.com  
I \ @fundacaoalealrios